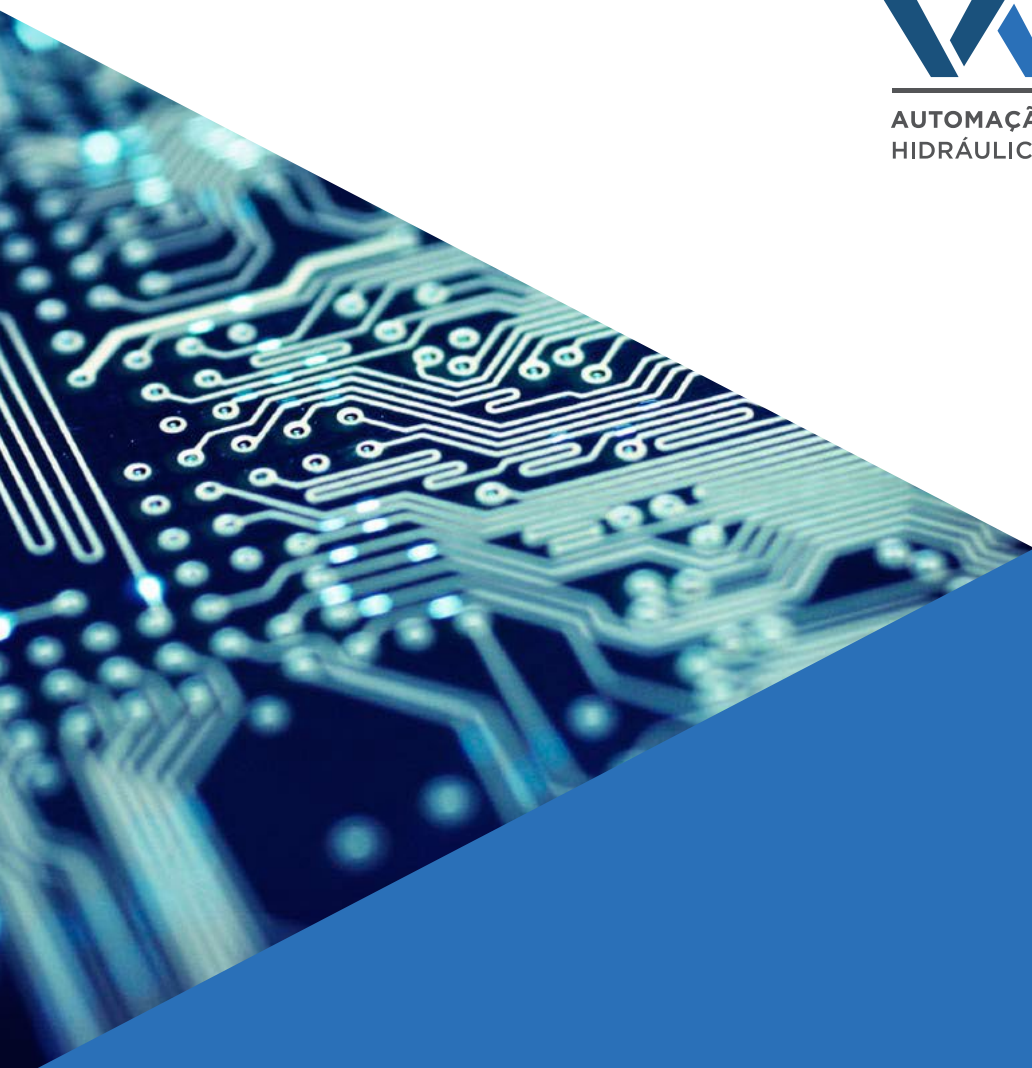


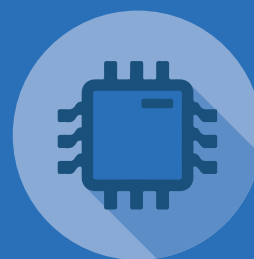


AUTOMAÇÃO E MANUTENÇÃO INDUSTRIAL
HIDRÁULICA | PNEUMÁTICA | ELETRÓNICA



/ MOTORES ELÉTRICOS

ELECTRICAL MOTORS / MOTORES ELÉCTRICOS



www.VMFLEX.pt



MOTORES ELÉTRICOS MONOFÁSICOS ELECTRICAL SINGLE-PHASE MOTORS MOTORES ELÉTRICOS MONOFÁSICOS

1500 RPM, FLANGE B5, ALTO PAR / 1500 RPM, B5 FLANGE, HIGH TORQUE / 1500 RPM, BRIDA B5, ALTO PAR



Ref.	Type	H.P.
ME-0105001	T-71	0,5
ME-0105002	T-80	0,75
ME-0105003	T-80	1

Ref.	Type	H.P.
ME-0105004	T-90	1,5
ME-0105005	T-90	2
ME-0105006	T-100	3

1500 RPM, FLANGE B14 ALTO PAR / 1500 RPM, B14 FLANGE, HIGH TORQUE / 1500 RPM, BRIDA B14 ALTO PAR



Ref.	Type	H.P.
ME-0114001	T-71	0,5
ME-0114002	T-80	0,75
ME-0114003	T-80	1

Ref.	Type	H.P.
ME-0114004	T-90	1,5
ME-0114005	T-90	2
ME-0114006	T-100	3

MOTORES ELÉTRICOS TRIFÁSICOS ELECTRICAL THREE-PHASE MOTORS MOTORES ELÉTRICOS TRIFÁSICOS

1500 RPM, FLANGE B5 / 1500 RPM, B5 FLANGE / 1500 RPM, BRIDA B5



Ref.	Type	H.P.
ME-0205001	T-56	0,08
ME-0205002	T-56	0,12
ME-0205003	T-63	0,16
ME-0205004	T-63	0,25
ME-0205005	T-71	0,33
ME-0205006	T-71	0,5
ME-0205007	T-80	0,75
ME-0305001	T-80 (IE2)	1
ME-0305002	T-90 (IE2)	1,5
ME-0305003	T-90 (IE2)	2

Ref.	Type	H.P.
ME-0305004	T-100 (IE2)	3
ME-0305005	T-100 (IE2)	4
ME-0305006	T-112 (IE2)	5,5
ME-0305007	T-132 (IE2)	7,5
ME-0305008	T-132 (IE2)	10
ME-0305008.1	T-132 (IE2)	12,5
ME-0305009	T-160 (IE2)	15
ME-0305010	T-160 (IE2)	20
ME-0305011	T-180 (IE2)	25
ME-0305012	T-180 (IE2)	30

1500 RPM, FLANGE B14 / 1500 RPM, B14 FLANGE / 1500 RPM, BRIDA B14



Ref.	Type	H.P.
ME-0214001	T-56	0,08
ME-0214002	T-56	0,12
ME-0214003	T-63	0,16
ME-0214004	T-63	0,25
ME-0214005	T-71	0,33
ME-0214006	T-71	0,5
ME-0214007	T-80	0,75

Ref.	Type	H.P.
ME-0314001	T-80 (IE2)	1
ME-0314002	T-90 (IE2)	1,5
ME-0314003	T-90 (IE2)	2
ME-0314004	T-100 (IE2)	3
ME-0314005	T-100 (IE2)	4
ME-0314006	T-112 (IE2)	5,5



ASSISTÊNCIA 24 HORAS

PORTO:

229 698 040

LISBOA:

215 817 952



PORTO

Zona Industrial Alto de Vilar
R. Bouça dos Estilhadouros, 306/314
4445-044 ALFENA • Portugal
Tlf. +351 229 698 040 • Fax. +351 220 100 362
geral@vmflex.pt

LISBOA

Parque Industrial do Seixal
R. Rodrigo Sarmento de Beires, Lote 13, Arm 2
2840-068 ALDEIA DE PAIO PIRES • Portugal
Tlf. +351 215 817 952
lisboa@vmflex.pt



PME líder '17